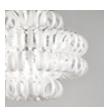


## Model AP 35\_CE

One ring, infinite combinations. The concept of the Ecos collection is just in one element: the glass ring. The chromatic and texture variations that the designers Renato Toso, Noti Massari e Associati have been able to obtain from this simple element are several. That makes the collection extremely customizable in terms of shapes and sizes, for a truly original lighting. Available in the following versions: suspension, applique and floor lamp. Rigadin white or crystal colour glass. Metal parts finishing in satin bronze and chrome.

### GLASS FINISH

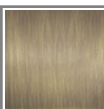


**BCRI**  
white striped



**CRR I**  
crystal striped glass

### FRAME FINISH



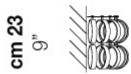
**BS**  
matt bronze 2



**CR**  
glossy chrome



cm 35  
14"



cm 18  
7"



ECOS AP 35 CRR I BS G9 CE

### LIGHT SOURCES

2x60W 220-240V 50/60Hz G9

### TECH DATA

⊥ IP20

⊙0,3m

VOLUME: Mc 0,05

PACKAGE: N.1

NET WEIGHT: Kg 2,50

GROSS WEIGHT: Kg 4,00

### CERTIFICATIONS

EU Cert



International Cert

